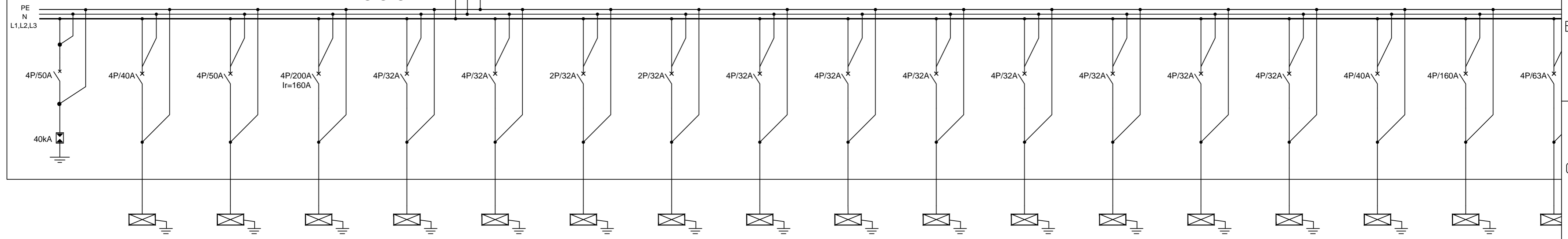
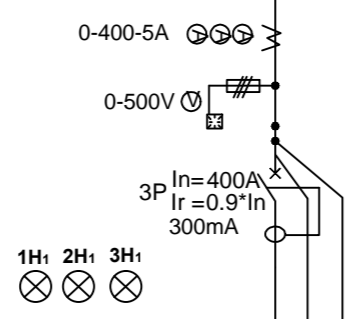


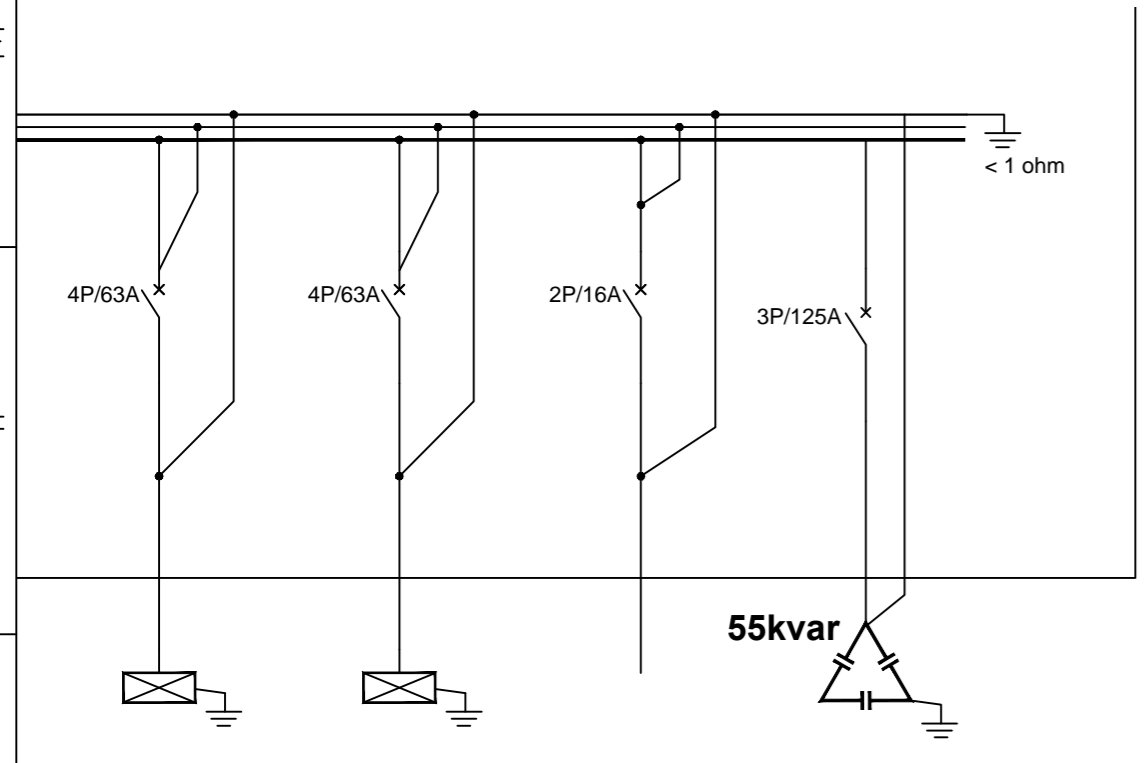
ACYABY-F 2x[4x185+95]mm<sup>2</sup> de la post trafa 250 kVA  
 ACYABY-F 2x[4x185+95]mm<sup>2</sup> de la grup electrogen 250 kVA

**TEG**  
 Grad de protectie: IP65  
 Carcasa metalica, inclusiv incuietoare  
 Montaj aparent la exterior  
 Rezerva spatiu : 25%

Pi	312.3
Pa	178.0
Ic	279.29
Ksc	0,57



Denumire circuit	C1	C2	C3	C4	C5	C6	C7	C8	C9	C10	C11	C12	C13	C14	C15	C16	C17
Destinatie	Alimentare tablou electric sala asteptare - TSA	Alimentare tablou electric cladire azilanti - TEA	Alimentare tablou electric cladire administrativa - TCA	Alimentare tablou electric grup sanitar nr.1 - TGS 1	Alimentare tablou electric grup sanitar nr.2 - TGS 2	Alimentare tablou electric punct control intrare nr.1 - TPTF1	Alimentare tablou electric punct control intrare nr.1 - TPTF2	Alimentare tablou electric punct control amanuntit	Alimentare tablou electric cabina control nr.1 - TEC1	Alimentare tablou electric cabina control nr.2 - TEC2	Alimentare tablou electric cabina control nr.3 - TEC3	Alimentare tablou electric cabina control nr.4 - TEC4	Alimentare tablou electric cabina control nr.5 - TEC5	Alimentare tablou electric cabina control nr.6 - TEC6	Tablou electric de distributie TExt 1	Tablou electric de distributie TExt 2	Tablou electric de distributie TExt 3
Sect. cablu CYY-F [ mm <sup>2</sup> ]	CYABY-F 5x10	CYABY-F 5x16	CYABY-F 4x95+50	CYABY-F 5x6	CYABY-F 5x6	CYABY-F 3x10	CYABY-F 3x10	CYABY-F 5x6	CYABY-F 5x6	CYABY-F 5x6	CYABY-F 5x6	CYABY-F 5x6	CYABY-F 5x6	CYABY-F 5x6	CYABY-F 5x10	CYABY-F 4x70+35	CYABY-F 4x70+35
Pi [ kW ]	L1																
	L2					3.6											
	L3						3.1										
L1, L2, L3	14	20.5	75.4	5.6	5.6		5	6.7	9.1	9.1	6.7	8.2	6.7	15	76	20	
Ic [ A ]	15.12	23.99	115.36	9.07	9.07	19.57	16.85	9.00	10.25	13.10	13.10	10.25	12.55	10.25	27.00	109.44	36.00



C17	C18	C19	C20	Pi (kW)	Total Pi (kW)
Tablou electric de distributie TExt 3	Tablou electric de distributie TExt 4	Redresor grup electrogen	Baterie de condensatori in 11 trepte 55kVAr		
CYABY-F 5x25	CYABY-F 5x25	CYABY-F 3x2.5	CYABY-F 4x50		
		2		2.0	312.3
				3.6	
				3.1	
20	20			303.6	
36.00	36.00	3.60			

**NOTA:**  
 - Tablourile de distributie vor fi realizate utilizand aparataj, componente de instalare si de racordare, agrementate in Romania si testate in laborator .  
 Conceptia sistemului trebuie sa fie validata prin incercari de tip, conform SR EN 61439.1.  
 - In tablou se va lasa un spatiu de rezerva de 25% pentru montarea de aparate noi.

AMENAJAREA PUNCTULUI INTERNATIONAL DE TRECERE A FRONTIEREI DE STAT ROMANO-UCRAINIENE PENTRU PASAGERI SI MARFA IN REGIM DE BAC INTRE LOCALITATILE ISACCEA (ROMANIA) SI ORLIVKA (UCRAINA)		PROIECT CNM183	FAZA PT+DE
BENEFICIAR	<b>SC NAVROM BAC SRL</b>		
PROIECTANT GENERAL	<b>S.C. TPF CPROJECT S.R.L.</b> C.U.I. RO 26985401, O.N.R.C. J40/5420/2010 Str: Elev Stefanescu, nr:6, bl. 463, sc. 1, ap. 23, sector 2, Bucuresti, Romania email: office@tfp.ro		
SEF PROIECT	ing. C. SANDU	SCHEMA MONOFILARA TABLOU ELECTRIC GENERAL TEG	
PROIECTAT	ing. A. GAFTON		
VERIFICAT	ing. M. DUTA	SCARA %	DATA 03.2017
SPECIALITATEA: INSTALATII ELECTRICE		CNM183-PTH+DE-IE-13	